



**Old Loose Hill, Loose, Maidstone, ME15 0BH**  
**Price £575,000**



#### DISTINCTIVE VILLAGE HOME WITH HISTORY, CHARM AND VALLEY VIEWS

Tucked away in the heart of the picturesque Loose Valley, this unique Grade II listed characterful three-bedroom home enjoys a charming village setting with far-reaching valley views and access to a local amenities. Dating back to the early 1600s, the property combines its rich heritage with open-plan living, making it a standout choice for those seeking something special.

The house is arranged over three floors and showcases a wealth of period features, including exposed beams, vaulted ceilings, statement fireplaces with log burners, and a striking mezzanine level. The layout is well suited to modern living, with flexible space that includes a spacious study or second reception room — ideal for home working or use as a family snug. There is sizeable cellar doubling as a utility room with plumbing in place and an additional WC.

One of the real highlights is the south-facing rear garden, which offers two patio terraces, a lawned area, mature planting, a summer house currently used as an office, and two useful sheds — all set against the backdrop of open village and valley views. A garage provides parking and is located to the front of the property.

The property enjoys a central position in Loose, a highly regarded village known for its ragstone cottages, flowing stream, and beautiful walks. Within walking distance, there is the Chequers Inn - a 17th-century pub- a post office, and a beautiful 14th-century church. Maidstone is only three miles with a range of shopping and social facilities as well as excellent transport links to London available from Maidstone, Staplehurst or Marden Stations. Families are well catered for with Loose Primary School just moments away, along with excellent access to several Grammar schools and two independent schools in Sutton Valence.

Viewing is highly recommended. Call Page and Wells Loose Office and book your viewing today to avoid missing out.





## **GROUND FLOOR**

### **Entrance Hall**

**Lounge 12'11" x 12'7" (3.94m x 3.84m)**

**Bedroom 1 11'11" x 9'3" (3.64m x 2.83m)**

**Bedroom 2 11'4" x 8'11" (3.47m x 2.73m)**

**Bedroom 3 11'9" x 9'0" (3.59m x 2.75m)**

### **Family Bathroom**

## **FIRST FLOOR**

**Sitting/Kitchen/Dining Area 30'4" x 16'7" (9.25m x 5.08m)**

**Mezzanine 13'11" x 10'7" (4.25m x 3.25m)**

## **CELLAR**

**Utility Room 15'5" x 14'8" (4.72m x 4.48m)**

## **EXTERNALLY**

**Office 15'5" x 12'2" (4.72m x 3.71m)**

**Green House 8'0" x 6'3" (2.44m x 1.93m)**

**Garage 15'8" x 8'2" (4.78m x 2.50m)**

# Old Loose Hill, Loose, Maidstone, Kent

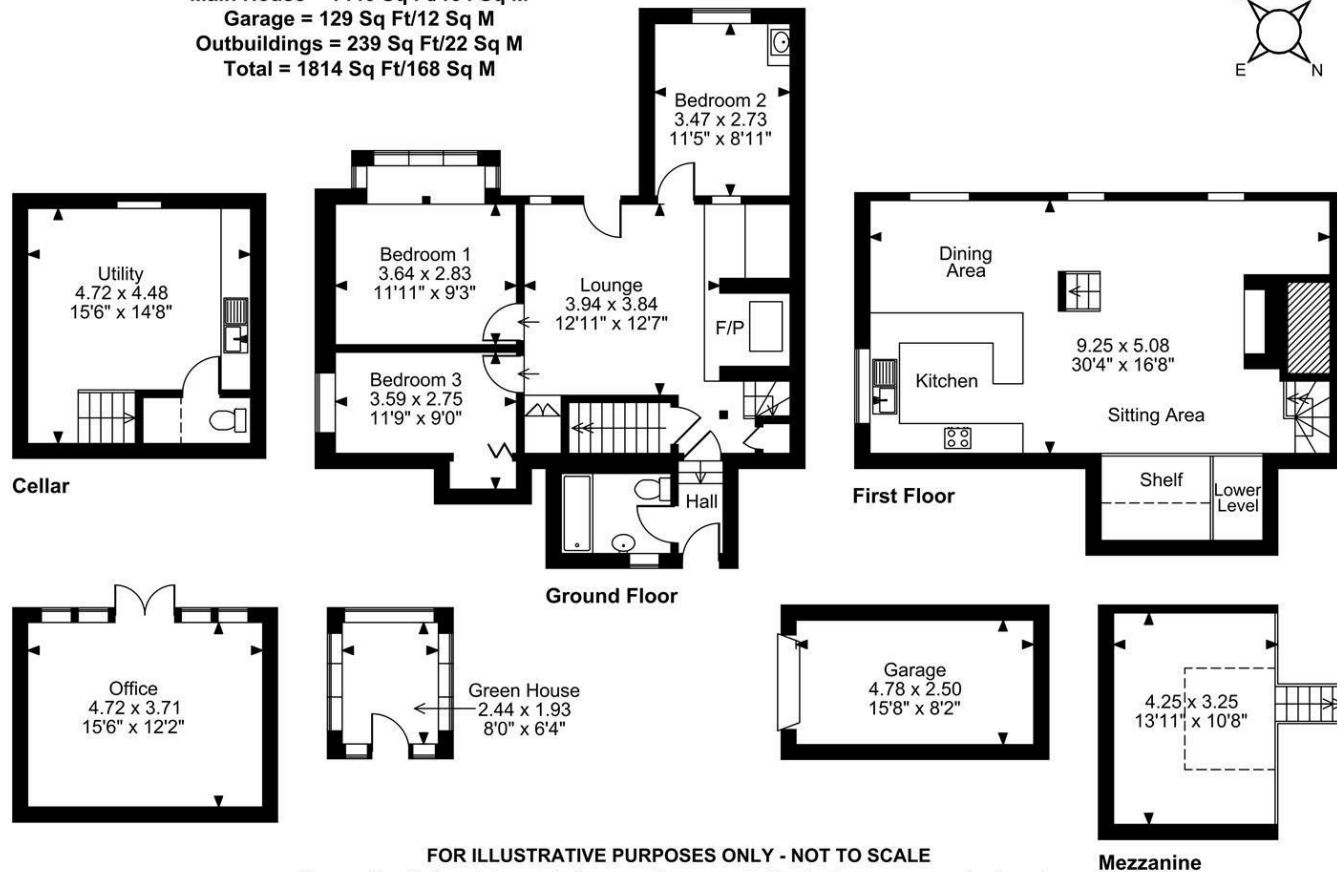
Approximate Gross Internal Area

Main House = 1446 Sq Ft/134 Sq M

Garage = 129 Sq Ft/12 Sq M

Outbuildings = 239 Sq Ft/22 Sq M

Total = 1814 Sq Ft/168 Sq M



FOR ILLUSTRATIVE PURPOSES ONLY - NOT TO SCALE

The position & size of doors, windows, appliances and other features are approximate only.  
© ehouse. Unauthorised reproduction prohibited. Drawing ref. dig/8652100/LCO

